

NORTH

August 30, 2022  
Project No: 2104400

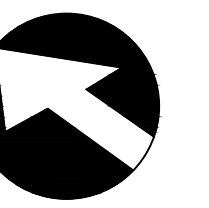


# DRAFT MASTER PLAN Morgan Hill Outdoor Sports Complex The City of Morgan Hill



LANDSCAPE ARCHITECTURE  
 CIVIL ENGINEERING  
 SPORT PLANNING & DESIGN  
 2455 The Alameda, Ste. 200  
 Santa Clara, CA 95050  
 tel: 408.985.7200  
 fax: 408.985.7260  
 www.verdedesigninc.com





NORTH

August 30, 2022  
Project No: 2104400



## DRAFT MASTER PLAN - ENLARGEMENT A

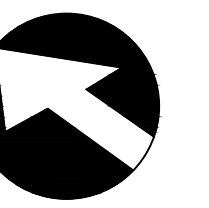
### Morgan Hill Outdoor Sports Complex

### The City of Morgan Hill



LANDSCAPE ARCHITECTURE  
CIVIL ENGINEERING  
SPORT PLANNING & DESIGN  
2455 The Alameda, Ste. 200  
Santa Clara, CA 95050  
tel: 408.985.7200  
fax: 408.985.7260  
www.verdedesigninc.com





NORTH

August 30, 2022  
Project No: 2104400

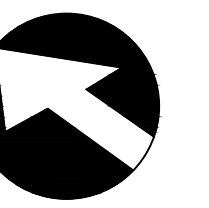
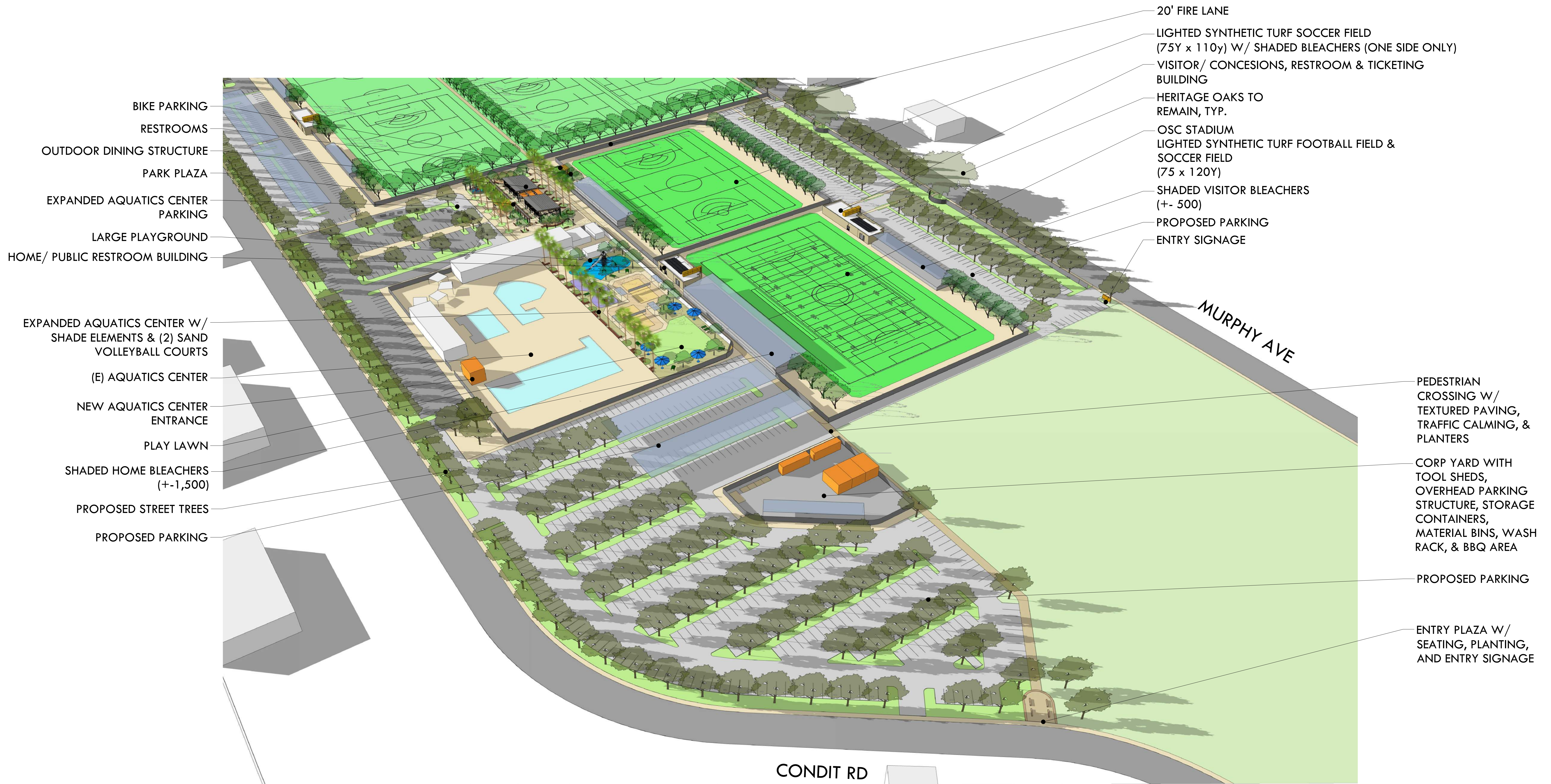


# DRAFT MASTER PLAN - ENLARGEMENT B - OPTION 1 Morgan Hill Outdoor Sports Complex The City of Morgan Hill



LANDSCAPE ARCHITECTURE  
CIVIL ENGINEERING  
SPORT PLANNING & DESIGN  
2455 The Alameda, Ste. 200  
Santa Clara, CA 95050  
tel: 408.985.7200  
fax: 408.985.7260  
www.verdedesigninc.com





NORTH

August 30, 2022  
Project No: 2104400



## DRAFT MASTER PLAN - ENLARGEMENT B - OPTION 2

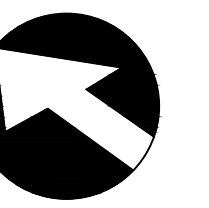
### Morgan Hill Outdoor Sports Complex

### The City of Morgan Hill



LANDSCAPE ARCHITECTURE  
CIVIL ENGINEERING  
SPORT PLANNING & DESIGN  
2455 The Alameda, Ste. 200  
Santa Clara, CA 95050  
tel: 408.985.7200  
fax: 408.985.7260  
www.verdedesigninc.com





NORTH

August 30, 2022  
Project No: 2104400



# DRAFT MASTER PLAN - ENLARGEMENT B - OPTION 3 Morgan Hill Outdoor Sports Complex The City of Morgan Hill



LANDSCAPE ARCHITECTURE  
CIVIL ENGINEERING  
SPORT PLANNING & DESIGN  
2455 The Alameda, Ste. 200  
Santa Clara, CA 95050  
tel: 408.985.7200  
fax: 408.985.7260  
www.verdedesigninc.com



# PARKING DEMAND/COUNTS COMPARISON

OPTION 1 - PREFERRED



DEMAND: 1,940  
COUNT: 1,760  
DIFFERENCE: (180)

OPTION 2



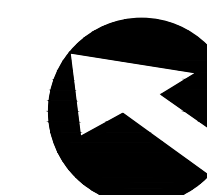
DEMAND: 1,820  
COUNT: 2,029  
DIFFERENCE: 209

OPTION 3



DEMAND: 1,850  
COUNT: 2,123  
DIFFERENCE: 273





NORTH

August 30, 2022  
Project No: 2104400

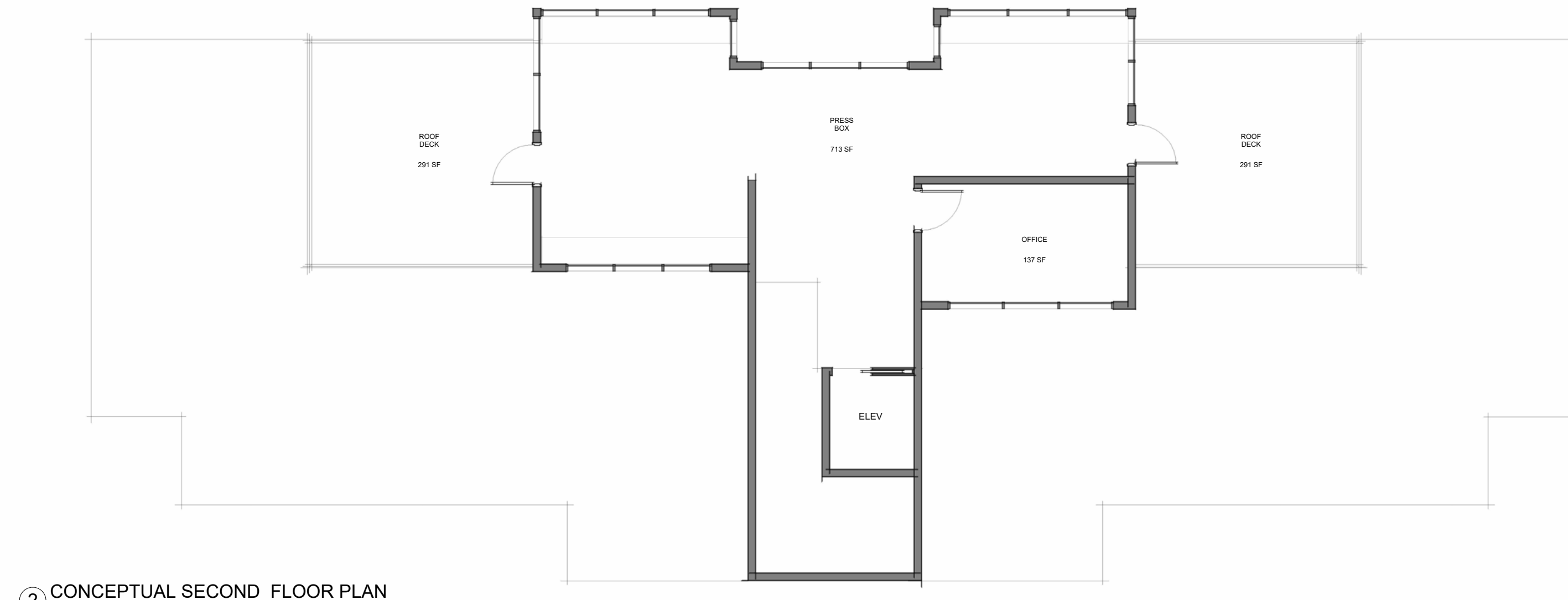


# DRAFT MASTER PLAN - ENLARGEMENT C - MALL Morgan Hill Outdoor Sports Complex The City of Morgan Hill

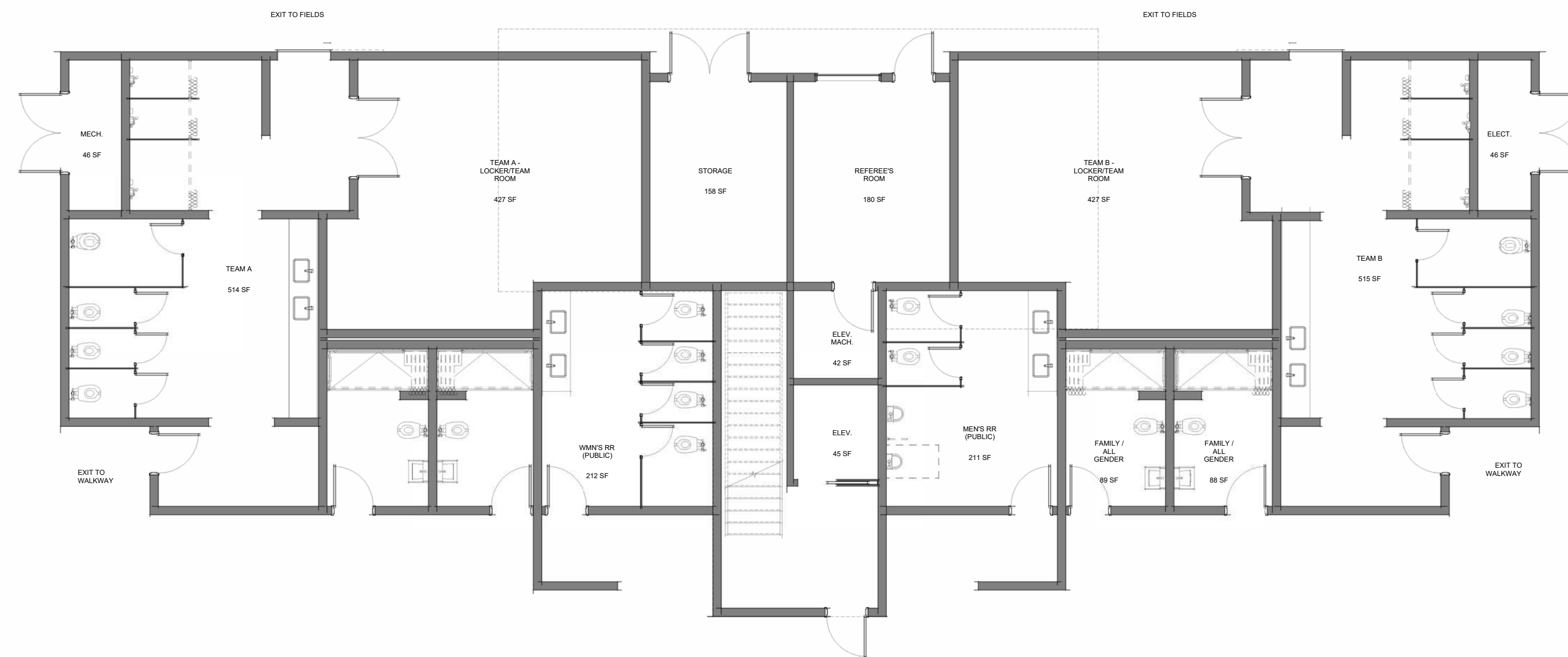


LANDSCAPE ARCHITECTURE  
CIVIL ENGINEERING  
SPORT PLANNING & DESIGN  
2455 The Alameda, Ste. 200  
Santa Clara, CA 95050  
tel: 408.985.7200  
fax: 408.985.7260  
www.verdedesigninc.com





② CONCEPTUAL SECOND FLOOR PLAN  
1/4" = 1'-0"



① CONCEPTUAL FIRST FLOOR PLAN  
1/4" = 1'-0"

FOOTPRINT:	112' X 35'	
AREA:	FIRST FLOOR	3,920 SF
	SECOND FLOOR	850 SF
	TOTAL	4,770 SF

APPROXIMATE COST @ \$550/SF      \$2.6M

#### AMENITIES

##### GROUND FLOOR

- 2 LOCKERROOMS
- 2 ALL GENDER / FAMILY RESTROOMS
- MENS / WOMENS PUBLIC RESTROOM
- REFEREE'S ROOM & STORAGE
- 

##### 2ND FLOOR

- PRESS BOX
- PRIVATE OFFICE
- ROOF DECK



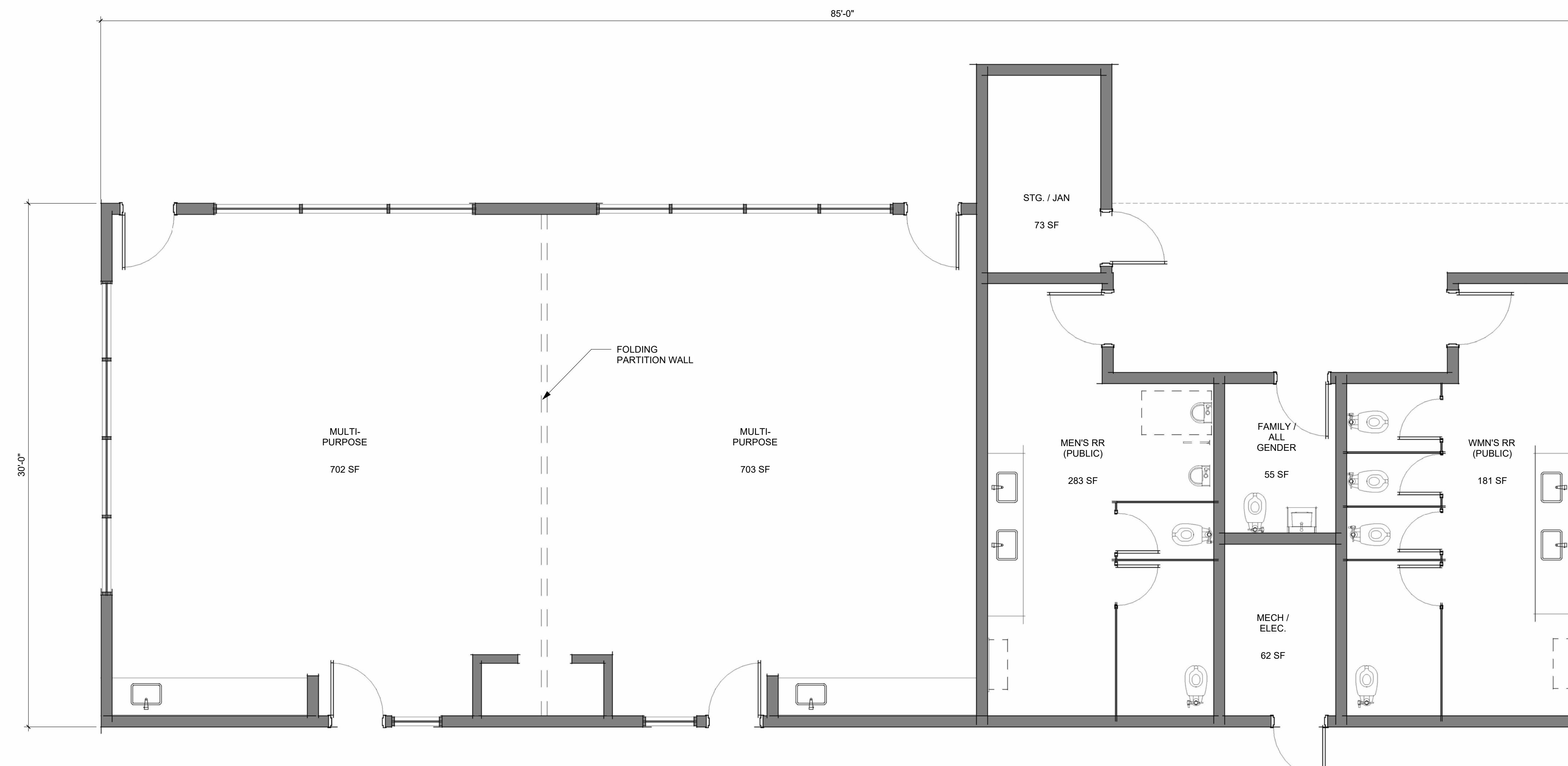
## TEAM LOCKERS & PRESS BUILDING





FOOTPRINT: 85' X 30'  
AREA: 2,550 SF

APPROXIMATE COST @ \$500/SF \$1.3M

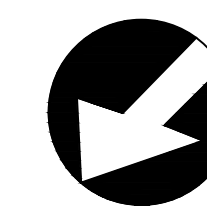


#### AMENITIES

- DIVIDABLE COMMUNITY ROOM - 1400 SF
- 1 ALL GENDER / FAMILY RESTROOMS
- MENS / WOMENS PUBLIC RESTROOM
- MAINTENANCE / STG.
- 

## COMMUNITY ROOM / TOURNAMENT BUILDING





NORTH

August 31, 2022  
Project No: 2104400



## DRAFT MASTER PLAN - ENLARGEMENT D - PLAZA

### Morgan Hill Outdoor Sports Complex

### The City of Morgan Hill



LANDSCAPE ARCHITECTURE  
CIVIL ENGINEERING  
SPORT PLANNING & DESIGN  
2455 The Alameda, Ste. 200  
Santa Clara, CA 95050  
tel: 408.985.7200  
fax: 408.985.7260  
www.verdedesigninc.com



PLAZA AREA WITH  
SPECIAL PAVING

EXISTING PALM TREES

ARBOR W/ DOWNLIGHTING

PLAY AREA

SHADE ELEMENTS WITH  
SPECIAL PAVING  
UNDERNEATH

EXPANDED AQUATICS  
CENTER PARKING

LARGE FORMAT SHADE  
TREES

GROUND LEVEL PLANTERS  
WITH SEATING



BIKE RACKS

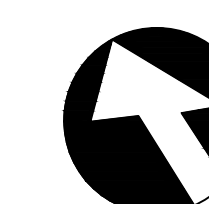
SHADE ELEMENTS

OUTDOOR DINING  
STRUCTURE

NEW PALM TREES

PLANTER W/ MULTI-  
TRUNK LARGE FORMAT  
FOCAL TREES

ART PIECE ON PLINTH



August 30, 2022  
Project No: 2104400



## DRAFT MASTER PLAN - ENLARGEMENT E - PLAZA

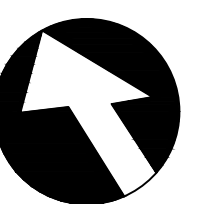
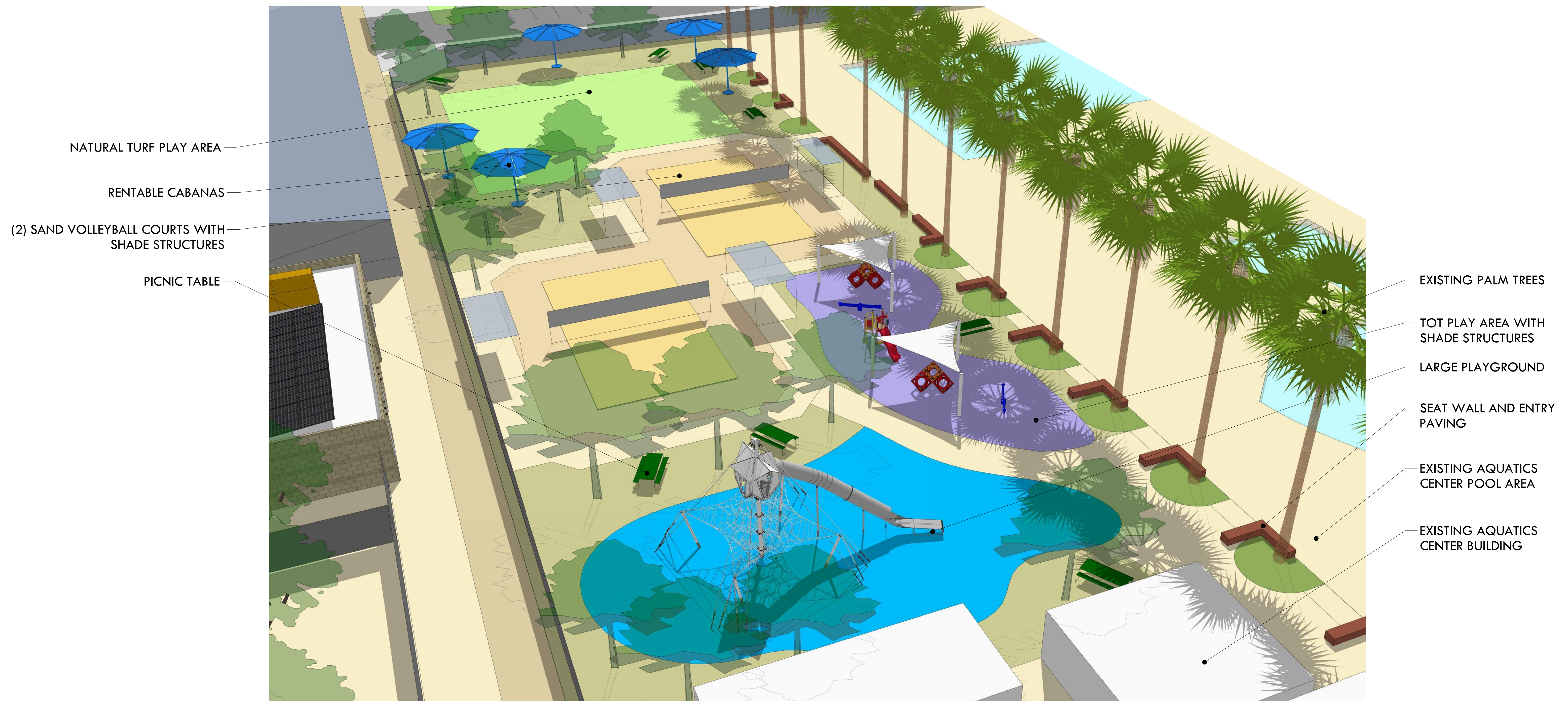
### Morgan Hill Outdoor Sports Complex

### The City of Morgan Hill



LANDSCAPE ARCHITECTURE  
CIVIL ENGINEERING  
SPORT PLANNING & DESIGN  
2455 The Alameda, Ste. 200  
Santa Clara, CA 95050  
tel: 408.985.7200  
fax: 408.985.7260  
www.verdedesigninc.com





August 31, 2022  
Project No: 2104400



## DRAFT MASTER PLAN - ENLARGEMENT F - EXPANDED AQUATICS CENTER

### Morgan Hill Outdoor Sports Complex

### The City of Morgan Hill



LANDSCAPE ARCHITECTURE  
CIVIL ENGINEERING  
SPORT PLANNING & DESIGN  
2455 The Alameda, Ste. 200  
Santa Clara, CA 95050  
tel: 408.985.7200  
fax: 408.985.7260  
www.verdedesigninc.com



PROFLOW DOUBLE WAVE  
MACHINE BY PACIFIC SURF  
DESIGNS

TROPICAL PLANTINGS  
WITH ADDITIONAL PALMS

LARGE FORMAT SHADE TREE

INDIVIDUAL PICNIC TABLE

RENTABLE CABANAS ON TURF

8' PERIMETER FENCE

RENTABLE CABANAS ON  
TURF

EXISTING PALM TREES

POOL PLAZA WITH SPECIAL PAVING

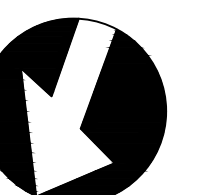
EXISTING AQUATICS  
CENTER POOL AREA

"WAVE PATTERN" CONCRETE PAVING

TOT PLAY AREA WITH  
SHADE

ART ENTRY ELEMENTS

ART FENCE



NORTH

August 31, 2022  
Project No: 2104400



## ENLARGEMENT G - WAVE MACHINE OPTION AT AQUATICS CENTER

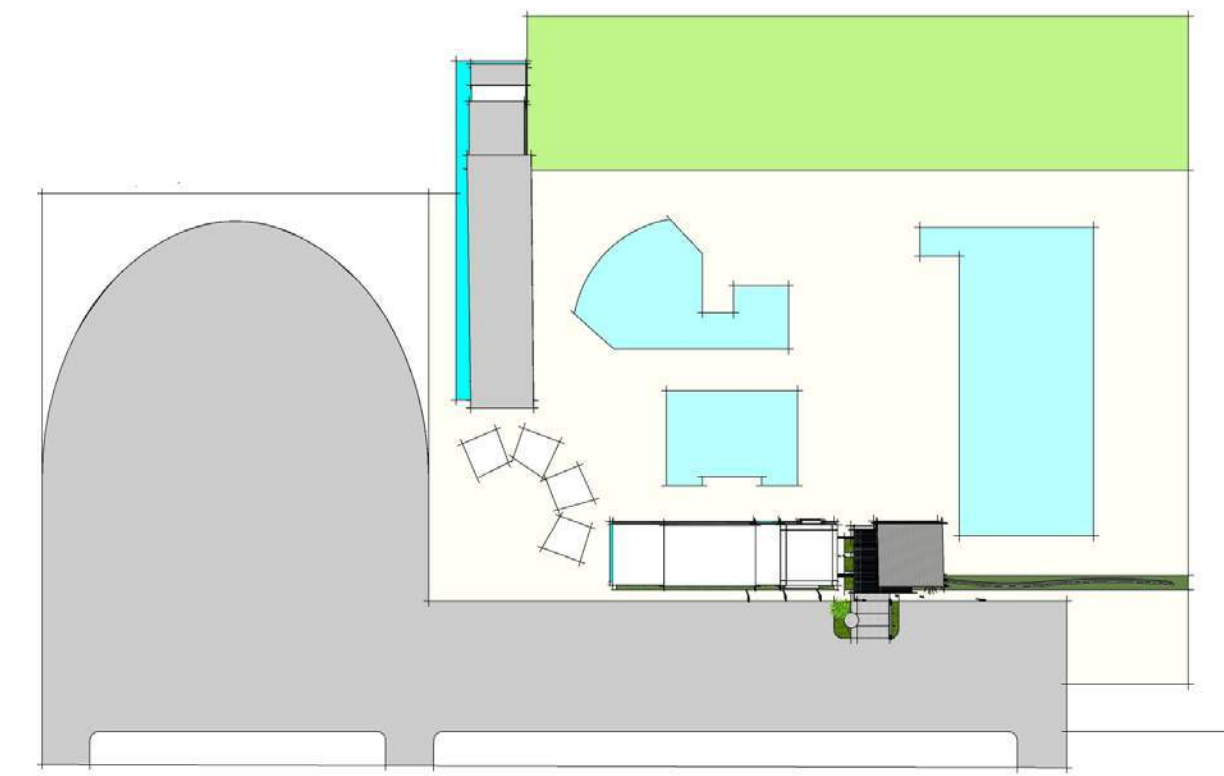
### Morgan Hill Outdoor Sports Complex Master Plan

### The City of Morgan Hill



LANDSCAPE ARCHITECTURE  
CIVIL ENGINEERING  
SPORT PLANNING & DESIGN  
2455 The Alameda, Ste. 200  
Santa Clara, CA 95050  
tel: 408.985.7200  
fax: 408.985.7260  
www.verdedesigninc.com



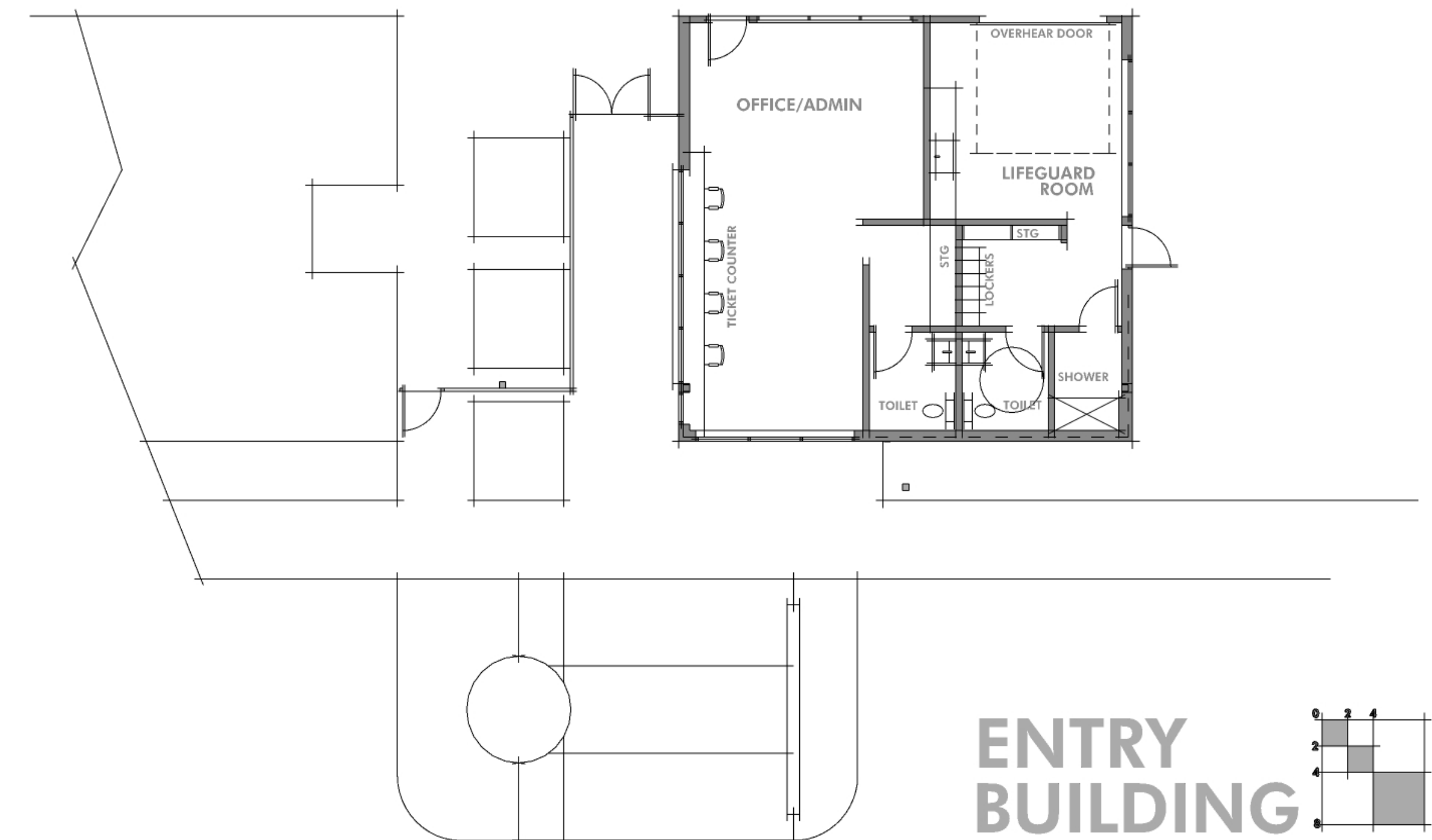


FOOTPRINT: 32' X 35'  
AREA: 1,120 SF

APPROXIMATE COST @ \$500/SF = \$560,000

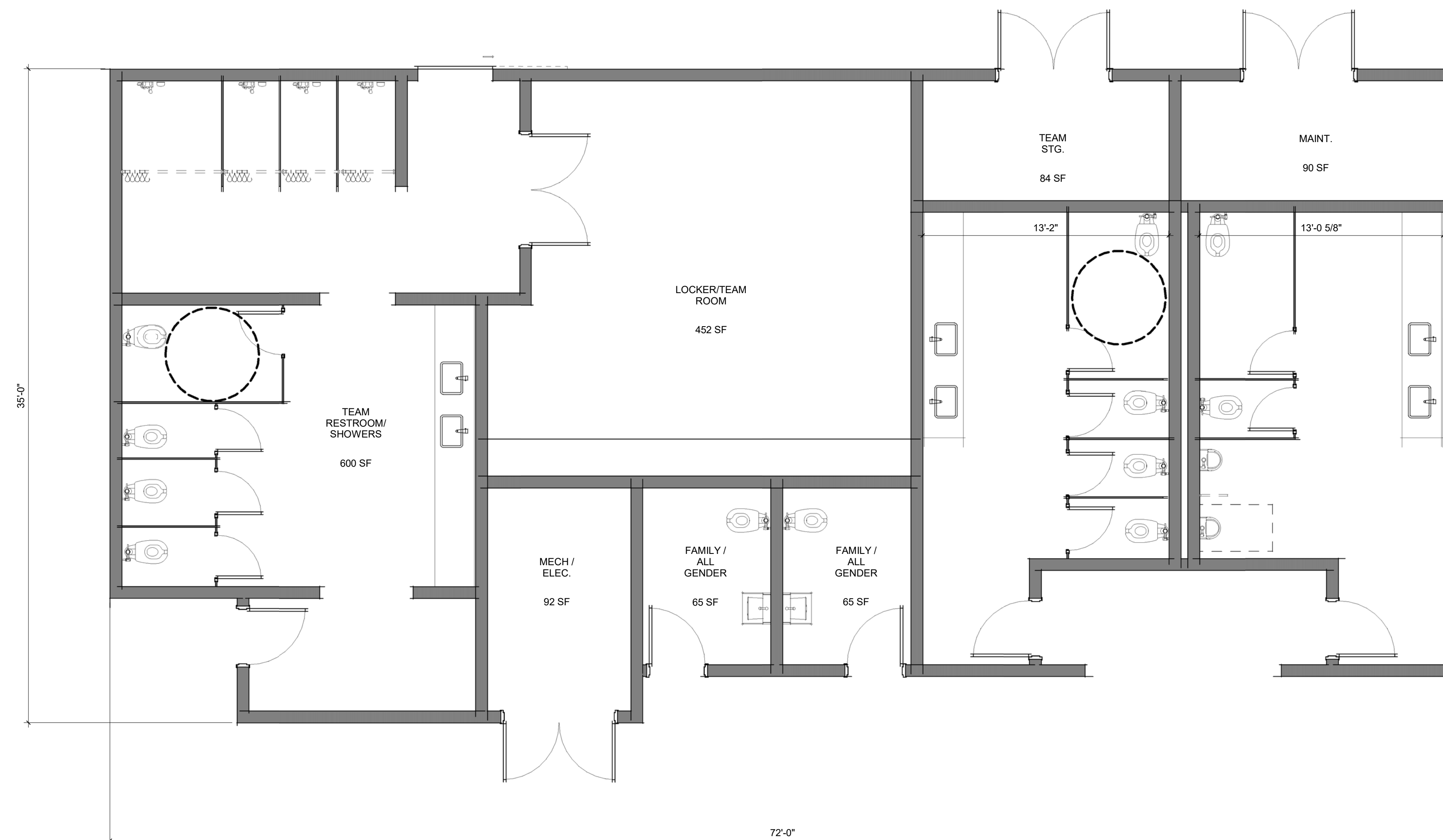
#### AMENITIES

- TICKET COUNTER
- OFFICE / ADMINISTRATIVE SPACE
- LIFEGUARD ROOM



## ENTRY BUILDING





FOOTPRINT: 72' X 35'  
AREA: 2,520 SF

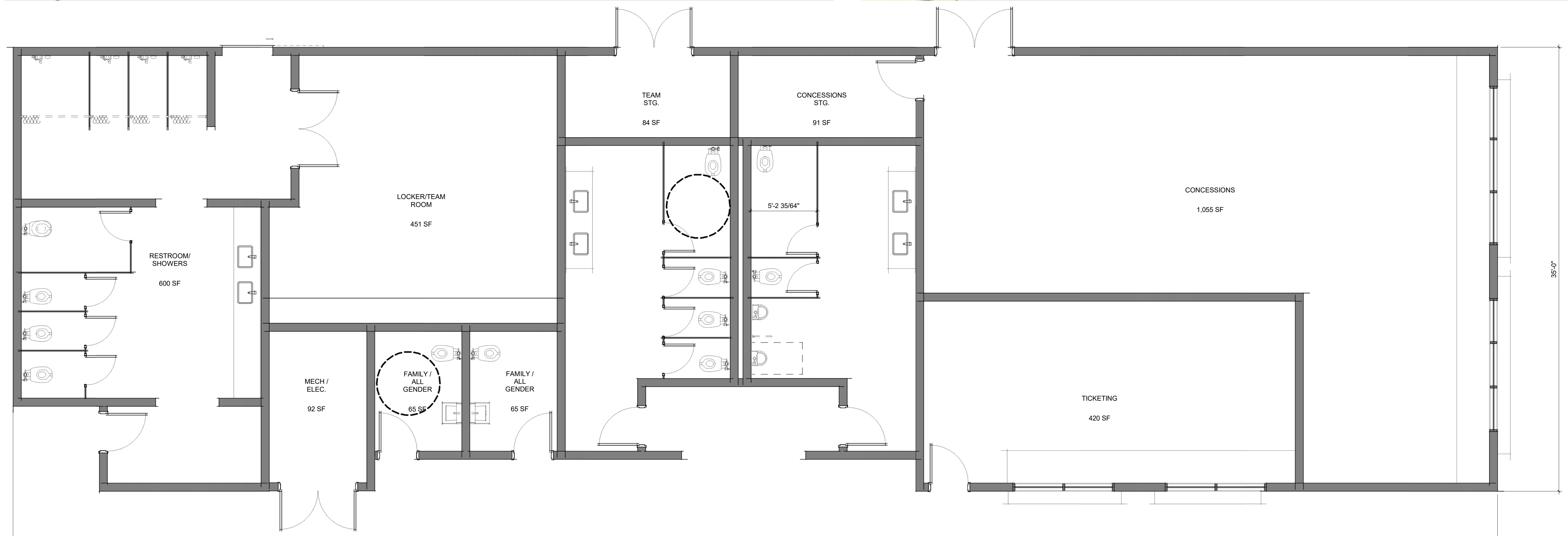
APPROXIMATE COST @ \$500/SF = \$1.26M

#### AMENITIES

- HOME LOCKER ROOMS AND SHOWER
- 2 ALL GENDER / FAMILY RESTROOMS
- MENS / WOMENS PUBLIC RESTROOM
- REFEREE'S ROOM & STORAGE
- 

## HOME / PUBLIC RESTROOM BUILDING





FOOTPRINT: 117 X 35'  
AREA: 4,100 SF

APPROXIMATE COST @ \$500/SF = \$2.05M

#### AMENITIES

- VISITOR LOCKER ROOMS AND SHOWER
- 2 ALL GENDER / FAMILY RESTROOMS
- MENS / WOMENS PUBLIC RESTROOM
- REFEREE'S ROOM & STORAGE

- CONCESSIONS AREA - 1155 SF
- TICKETNIG OFFICE - 420 SF
- 

## VISITOR LOCKERROOM / PUBLIC RESTROOM / CONCESSIONS/ TICKETING BUILDING