

What is SB 1383?

California is implementing statewide organic waste recycling and surplus edible food recovery to reduce emissions of methane from food and organic waste in landfills (SB 1383). This law also aims to reduce food insecurity by ensuring more surplus edible food reaches people in need instead of being thrown away.

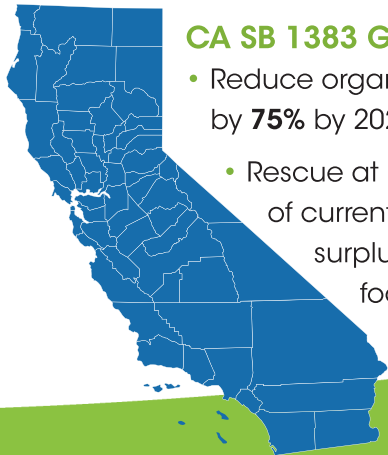
Service Requirements for San José Businesses

All San José businesses must have separate organic collection for indoor **receptacles** and outdoor **containers**.

- Receptacles need labels with graphic images to indicate primary accepted and prohibited materials.
- Receptacle labeling needs to match the containers.

How will this be enforced?

If your business is correctly separating waste into Wet, Dry and Customized containers and receptacles, you are already in compliance. If not, the City of San José may issue a fine of up to **\$500** per incident, per day.



CA SB 1383 Goals

- Reduce organic waste by **75%** by 2025
- Rescue at least **20%** of currently disposed surplus edible food by 2025

RESOURCES

About SB 1383:

SJEnvironment.org/SB1383



Republic Services

To add Wet service or adjust service:
SanJoseRecyclingTeam@republicservices.com
408-432-1234

Waste Enforcement

For questions about enforcement:
WasteEnforcement@sanjoseca.gov
408-535-3500

Zero Waste

For other questions:
ZeroWaste@sanjoseca.gov
408-535-3500



Funded by a grant from CalRecycle

Para recibir una copia de la publicación en español, visite SJEnvironment.org/SB1383.

Để nhận ấn phẩm này bằng Tiếng Việt, truy cập SJEnvironment.org/SB1383.

To receive this publication in a different language, email SJEnvironment@sanjoseca.gov.



SB 1383: Organic Waste Collection Requirements for Businesses

Understanding
SB 1383 and
how to implement
California's
new organic waste
requirements.



OPTION 1

Wet and Dry



Wet:

- Non-edible food
- Landscaping waste
- Soiled paper, cardboard, and paper dishware



Dry:

- Recyclable waste
- Everything else*

OPTION 2

Wet, Dry and Customized



Wet:

- Non-edible food
- Landscaping waste
- Soiled paper, cardboard, and paper dishware



Dry:

- Everything else*



Customized:

- Non-soiled recyclable waste, such as cardboard



ALTERNATIVE OPTIONS

- Donate edible surplus food:
SCCFoodRecovery.org
- Self-haul to a processing facility:
Contact WasteEnforcement@sanjoseca.gov
- Your business may qualify for a waiver if you have either:

- Container storage constraints

- **2 cubic yards or MORE** per week of total waste
AND less than 20 gallons of organic waste.



= 20 Gallons of organic waste

or

- **Less than 2 cubic yards** per week of total waste
AND less than 10 gallons of organic waste



= 10 Gallons of organic waste



2 Cubic Yards

96 Gallon

*For information on exceptions, call Republic Services at 408-432-1234

For more information about alternatives, visit
SJEnvironment.org/SB1383.