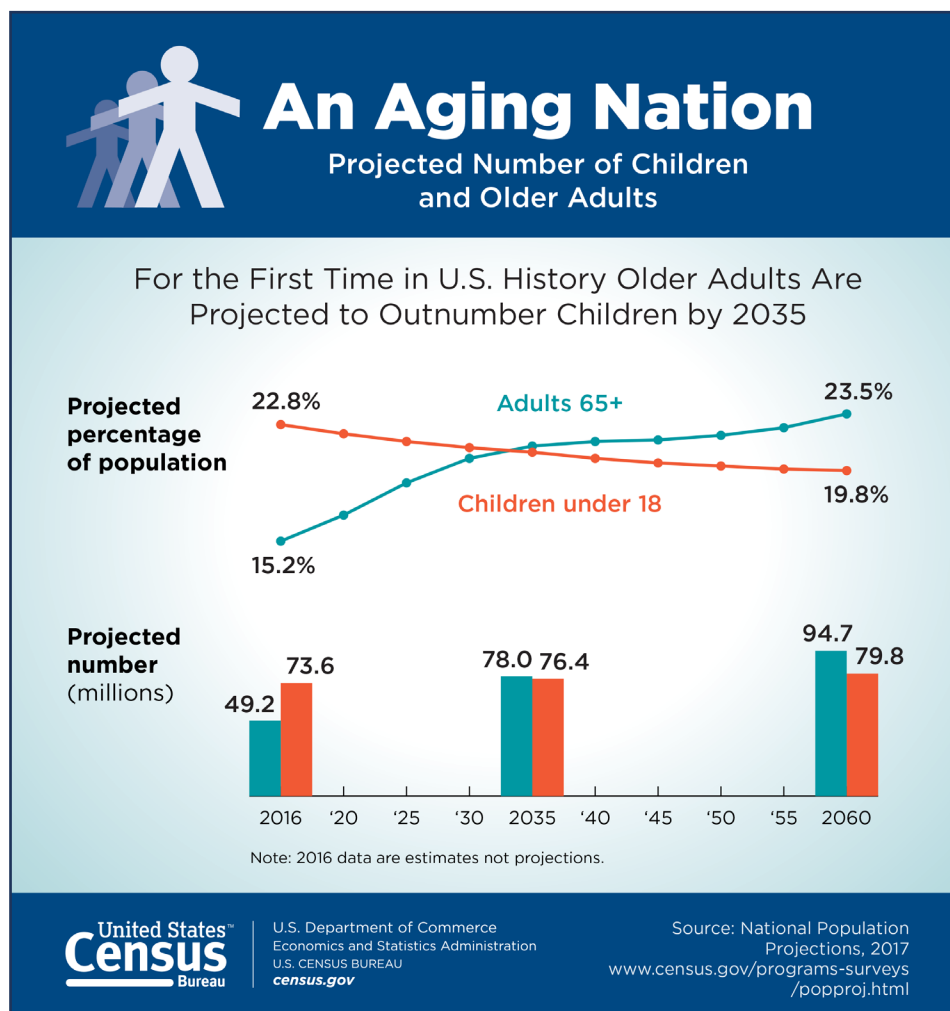
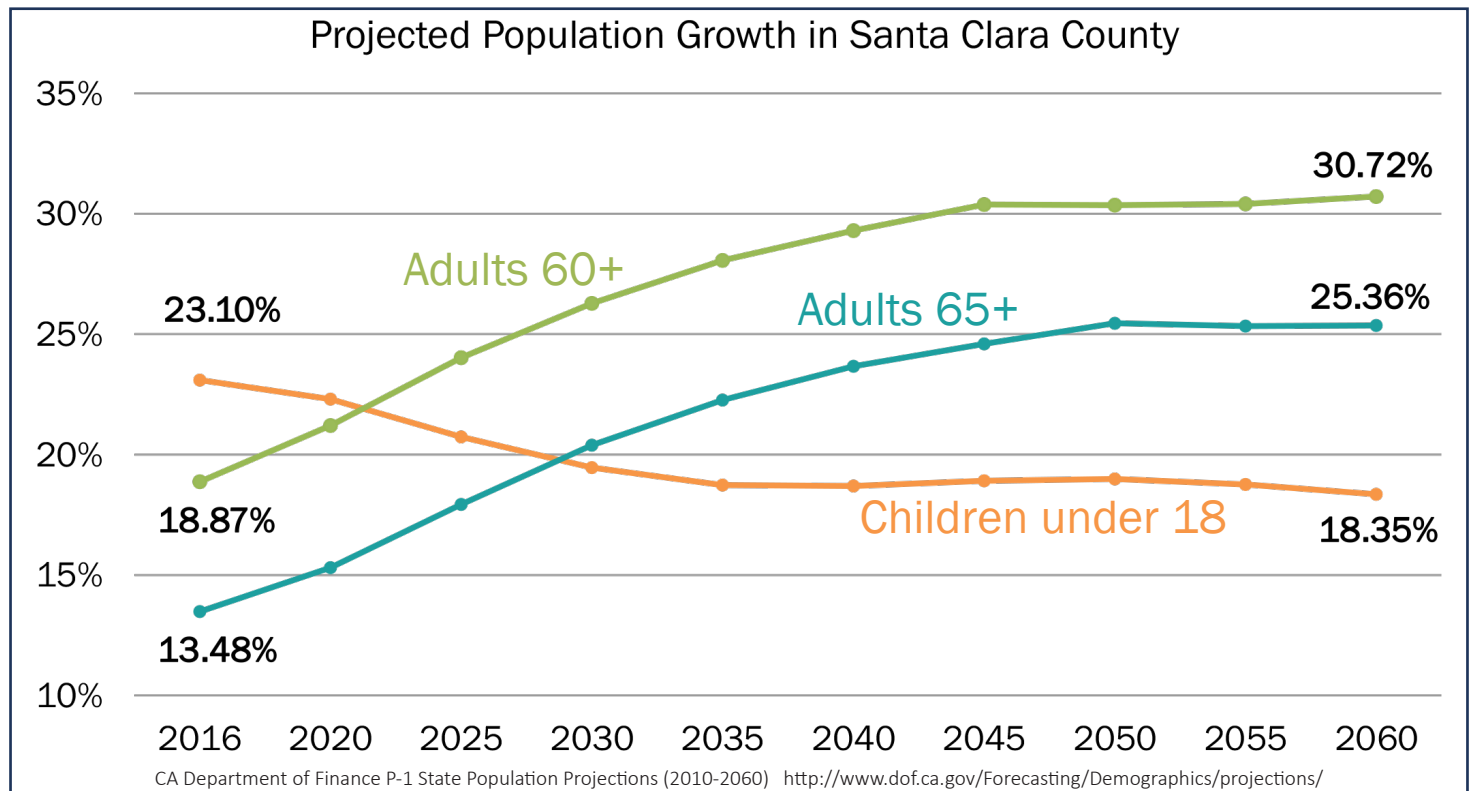


Older Adults Will Soon Outnumber Children in Santa Clara County

March 2019

Department of
Aging and Adult Services

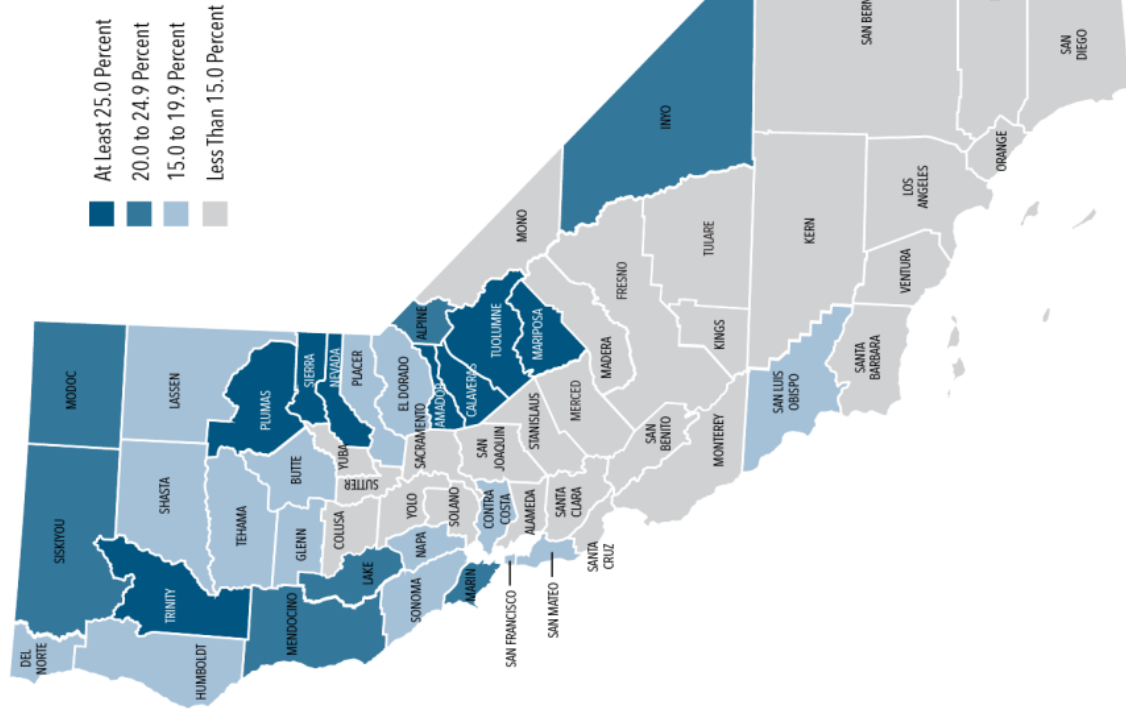


By 2030, the last of the Baby Boomers will be 65 years old and older adults will outnumber children in Santa Clara County, five years sooner than in the United States as a whole.

As projected by the California Department of Finance, adults age 65 and older will make up 20 percent of Santa Clara County's population by 2030 and will grow to over 25 percent by 2060. The number of adults age 60 and older has already climbed beyond the 20 percent mark and will make up over 30 percent of the total population of the county by 2060.

Older Adults Make Up More Than 1 in 4 Residents in Eight Counties

Share of Residents Age 65 or Older, 2016



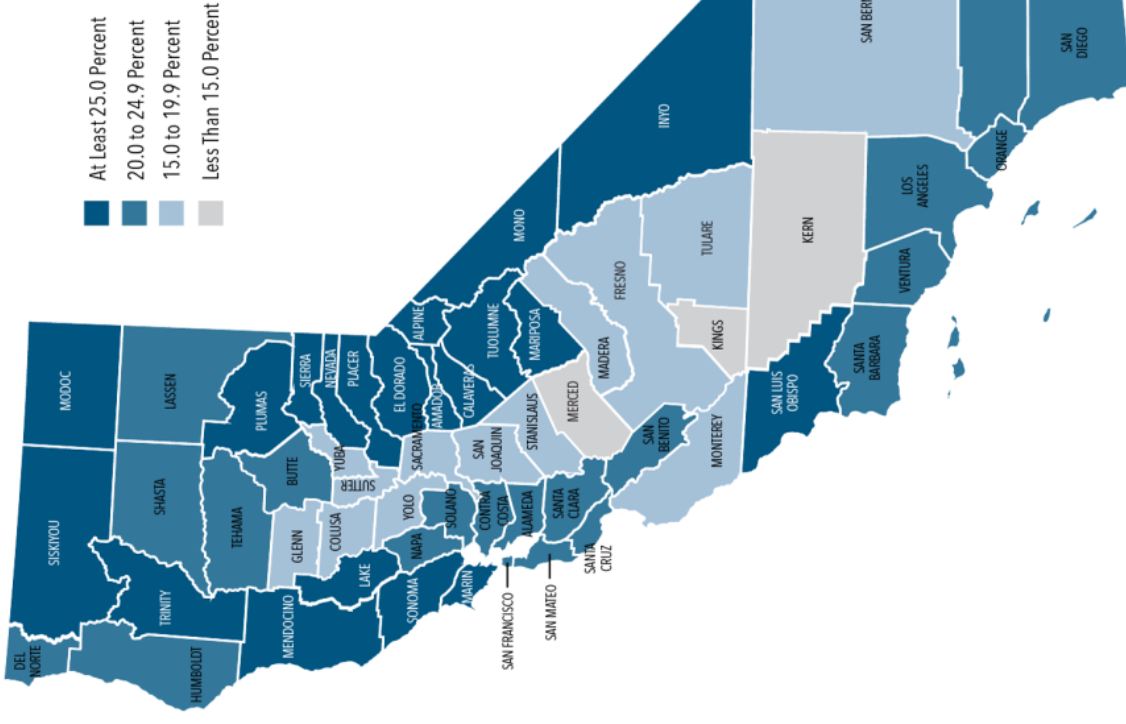
Source: Budget Center analysis of Department of Finance data



California Budget
& Policy Center
Independent Analysis. Shared Prosperity.

Older Adults Are Projected to Make Up More Than 1 in 4 Residents in 20 Counties by 2030

Projected Share of Residents Age 65 or Older, 2030



Source: Budget Center analysis of Department of Finance data



California Budget
& Policy Center
Independent Analysis. Shared Prosperity.