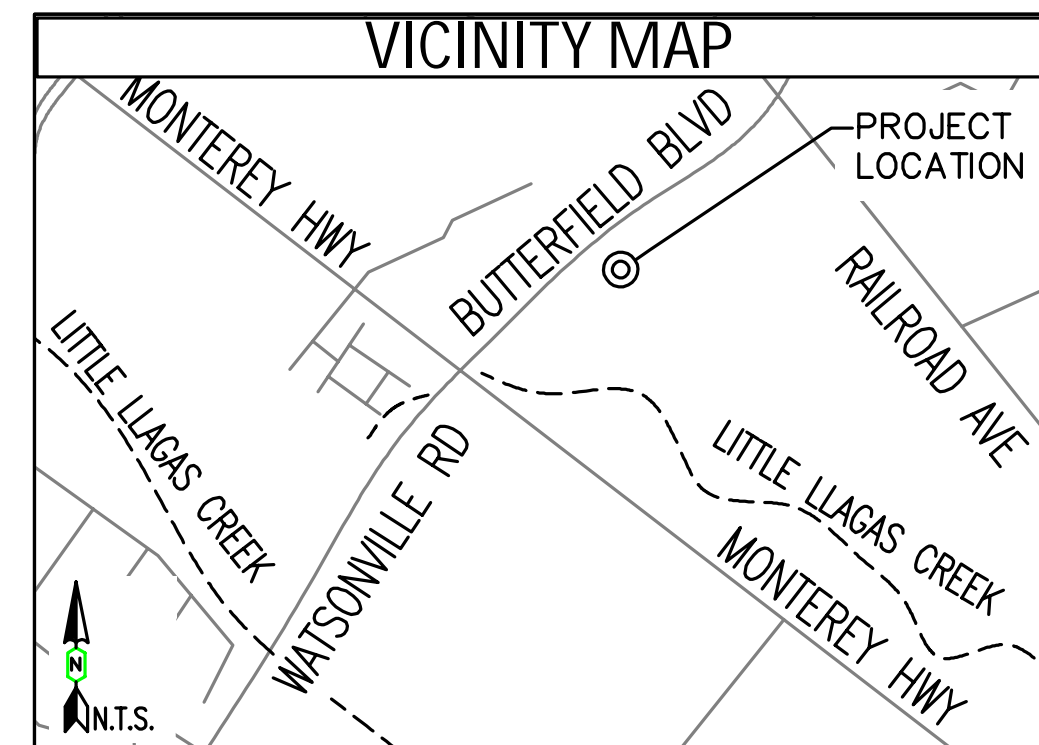


1	CABLE & PULLING DATA FOR ENCLOSURE 4						
TOTAL LENGTHS: FEEDER			1PH DIST.		3PH DIST.		
FROM ENCLOSURE	NO. OF CABLES	CABLE TYPE	ESTIMATED TENSION	ACTUAL TENSION	GALLONS LUBE	FRT END PACKS	RUN LENGTH W/TAILS
2	3	1100A	2,076LBS		2.5	3	351'
3	CABLE & PULLING DATA FOR ENCLOSURE 4						
TOTAL LENGTHS: FEEDER			1PH DIST.		3PH DIST.		
FROM ENCLOSURE	NO. OF CABLES	CABLE TYPE	ESTIMATED TENSION	ACTUAL TENSION	GALLONS LUBE	FRT END PACKS	RUN LENGTH W/TAILS
8	3	1100A	1,725LBS		2.5	3	315'
5	CABLE & PULLING DATA FOR ENCLOSURE 4						
TOTAL LENGTHS: FEEDER			1PH DIST.		3PH DIST.		
FROM ENCLOSURE	NO. OF CABLES	CABLE TYPE	ESTIMATED TENSION	ACTUAL TENSION	GALLONS LUBE	FRT END PACKS	RUN LENGTH W/TAILS
6	3	1/0A	1,137LBS		3.5	3	597'

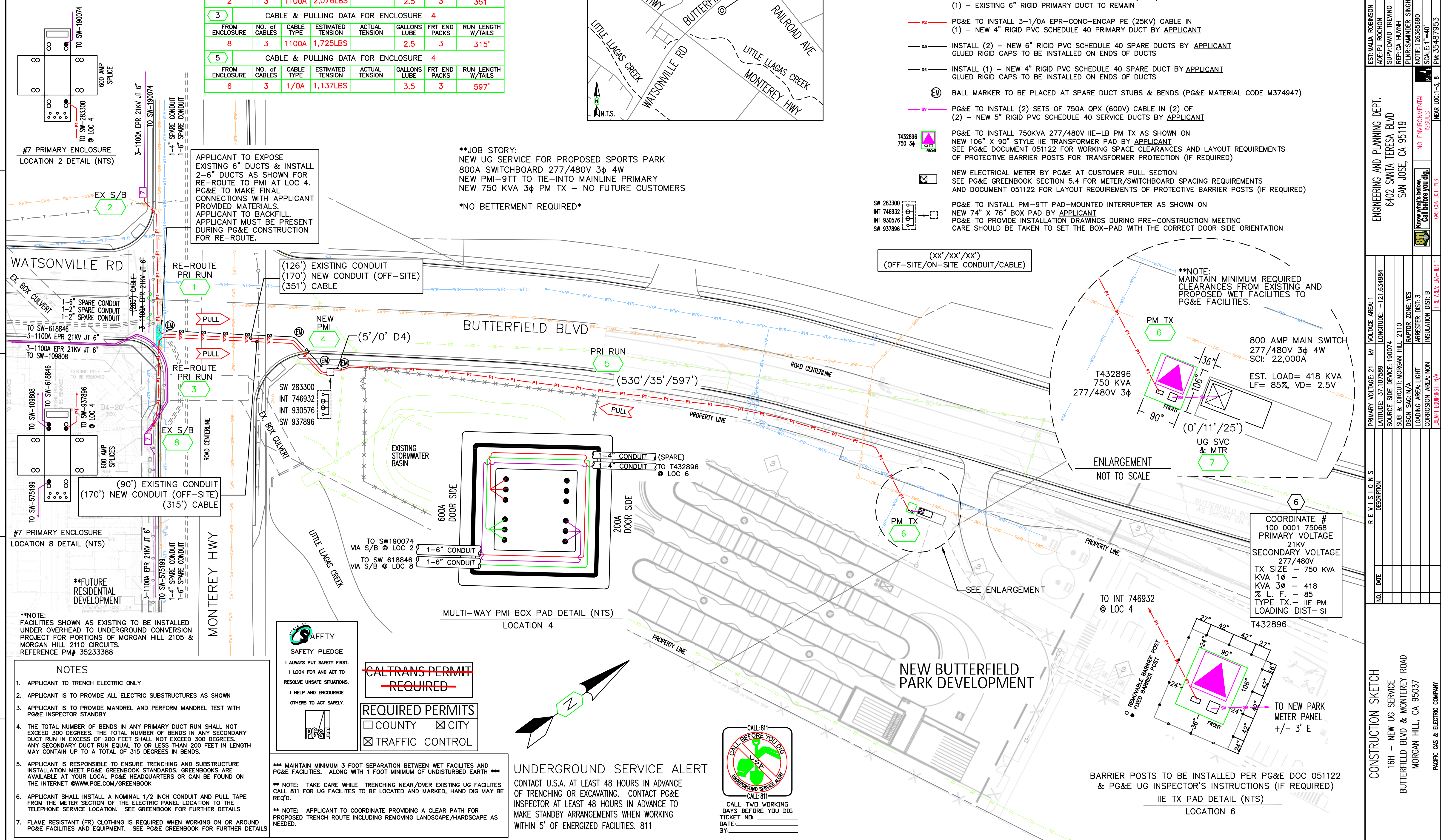


## LEGEND

- **P** — PG&E TO INSTALL 3-1100A EPR-CONC-ENCAP PE (25KV) CABLE IN  
 (1) — NEW 6" RIGID PVC SCHEDULE 40 PRIMARY DUCT BY APPLICANT (RE-ROUTE)
- **P1** — PG&E TO INSTALL 3-1100A EPR-CONC-ENCAP PE (25KV) CABLE IN  
 (1) — EXISTING 6" RIGID PRIMARY DUCT TO REMAIN
- **P2** — PG&E TO INSTALL 3-1/0A EPR-CONC-ENCAP PE (25KV) CABLE IN  
 (1) — NEW 4" RIGID PVC SCHEDULE 40 PRIMARY DUCT BY APPLICANT
- **D3** — INSTALL (2) — NEW 6" RIGID PVC SCHEDULE 40 SPARE DUCTS BY APPLICANT  
 GLUED RIGID CAPS TO BE INSTALLED ON ENDS OF DUCTS
- **D4** — INSTALL (1) — NEW 4" RIGID PVC SCHEDULE 40 SPARE DUCT BY APPLICANT  
 GLUED RIGID CAPS TO BE INSTALLED ON ENDS OF DUCTS
- (EM) BALL MARKER TO BE PLACED AT SPARE DUCT STUBS & BENDS (PG&E MATERIAL CODE M374947)
- **SV** — PG&E TO INSTALL (2) SETS OF 750A QPX (600V) CABLE IN (2) OF  
 (2) — NEW 5" RIGID PVC SCHEDULE 40 SERVICE DUCTS BY APPLICANT
- PG&E TO INSTALL 750KVA 277/480V IIE-LB PM TX AS SHOWN ON  
 NEW 106" X 90" STYLE IIE TRANSFORMER PAD BY APPLICANT  
 SEE PG&E DOCUMENT 051122 FOR WORKING SPACE CLEARANCES AND LAYOUT REQUIREMENTS  
 OF PROTECTIVE BARRIER POSTS FOR TRANSFORMER PROTECTION (IF REQUIRED)
- NEW ELECTRICAL METER BY PG&E AT CUSTOMER PULL SECTION  
 SEE PG&E GREENBOOK SECTION 5.4 FOR METER/SWITCHBOARD SPACING REQUIREMENTS  
 AND DOCUMENT 051122 FOR LAYOUT REQUIREMENTS OF PROTECTIVE BARRIER POSTS (IF REQUIRED)
- PG&E TO INSTALL PMI-9TT PAD-MOUNTED INTERRUPTER AS SHOWN ON  
 NEW 74" X 76" BOX PAD BY APPLICANT  
 PG&E TO PROVIDE INSTALLATION DRAWINGS DURING PRE-CONSTRUCTION MEETING  
 CARE SHOULD BE TAKEN TO SET THE BOX-PAD WITH THE CORRECT DOOR SIDE ORIENTATION

**\*\*JOB STORY:**  
NEW UG SERVICE FOR PROPOSED SPORTS PARK  
800A SWITCHBOARD 277/480V 3φ 4W  
NEW PMI-9TT TO TIE-INTO MAINLINE PRIMARY  
NEW 750 KVA 3φ PM TX - NO FUTURE CUSTOMERS

\*NO BETTERMENT REQUIRED\*



CONSTRUCTION SKETCH		R E V I S I O N S		PRIMARY VOLTAGE: 21 kV		VOLTAGE AREA: 1		ENGINEERING AND PLANNING DEPT:		EST: MALIA ROBINSON		408-500-5489	
16H - NEW UG SERVICE		DESCRIPTION		LATITUDE: 37.107589		LONGITUDE: -121.634984		6402 SANTA TERESA BLVD		ADE: P.J. ROCHON		408-859-3134	
BUTTERFIELD BLVD & MONTEREY ROAD				SOURCE SIDE DEVICE: 190074				SAN JOSE, CA 95119		SUPLY: DAVID TREVINO		559-341-5831	
MORGAN HILL, CA 95037				SUB & CIRCUIT: MORGAN HILL 2110						REP: CA. HUYNH		408-298-1040	
				DSGN SAG: N/A		RAPTOR ZONE: YES				PWR: SAMINDER SINGH		408-816-3243	
				LOADING AREA: LIGHT		ARRESTER DIST: 3				NOTIF: 126369890		JPA# N/A	
				CORROSION AREA: NON		INSULATION DIST: B				SCALE: 1"=40'		DATE: 11/6/2023	
				EXCEPT EQUIP INST: N/A		FREE AREA: LBA-TER 1		NO ENVIRONMENTAL ISSUES		NEAR LOC: 1-3, 8		SHEET: 1 OF 1 REV: 0	
PACIFIC GAS & ELECTRIC COMPANY								I know what's below Call before you dig!		GAS CONFLICT: YES			